

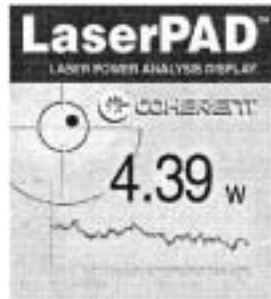
6. Select programs from the Pocket PC Main menu.



7. Tap on the LaserPAD icon in the program list.



The LaserPAD Splash screen will appear.



When the Connection Status box appears on the screen, the LaserPAD software connects with the SmartSensor Interface module. The SmartSensor parameters, followed by all of the user settings, are then loaded.

Once the Status box has cleared from the screen, you can begin using the Laser Power Analysis Display and SSIM.

Contact Information

USA	
Phone:	1.800.343.4912
Fax:	971.327.2777
E-Mail:	info_service@Coherent.com
Europe	
Phone:	+49-6071-968-0
Fax:	+49-6071-968-499
E-Mail:	info_service@Coherent.com
International	
Phone:	971.327.2700
Fax:	971.327.2777
E-Mail:	info_service@Coherent.com

For the latest Customer Service information, refer to our website: www.Coherent.com.

Coherent and the Coherent Logo are registered trademarks of Coherent, Inc. LaserPAD and SmartSensor are trademarks of Coherent, Inc.

LaserPAD™ Quick Start Guide
 © Coherent, Inc. 9/2004. Printed in the U.S.A.
 Part No. 0217-852-00, Rev. AB



LaserPAD™

Laser Power Analysis Display

Quick Start Guide

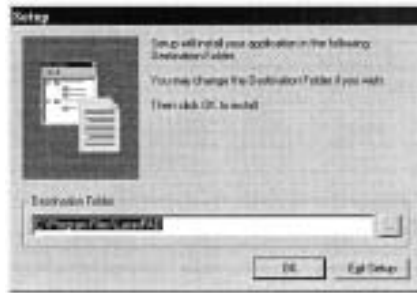
Unpacking

The LaserPAD SmartSensor™ Interface module and detector heads are shipped in foam inserts. Batteries are installed in the SmartSensor Interface module prior to shipment. To insure correct battery operation, the batteries require an initial overnight charge (approximately 14 hours). Visually check all cartons for damage before unpacking. If there is no visible damage, remove all items from the cartons and inspect them for damage. Immediately advise Coherent of any damage. A Returned Material Authorization (RMA) will be issued for any damaged instruments (see the back page of this guide for contact information).

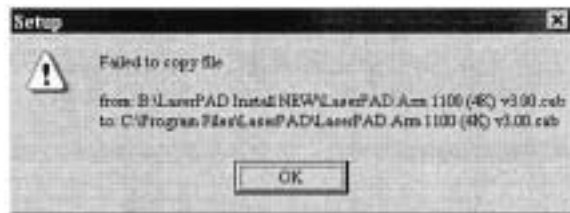
Software Installation

1. Start the host computer with the communication cradle connected.
2. Place the Pocket PC in the communication cradle and verify that ActiveSync is linked and communicating to the Pocket PC.
3. Select Run from the Start menu. Type (*name of CD drive*):\setup.exe (for example, E:\setup.exe) and press Enter.

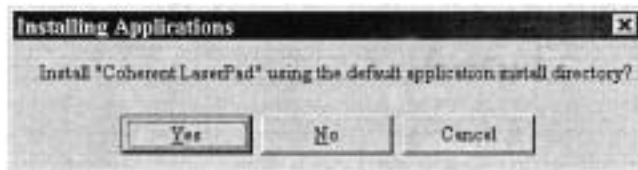
- If desired, you may change the host computer installation path when the default path appears.



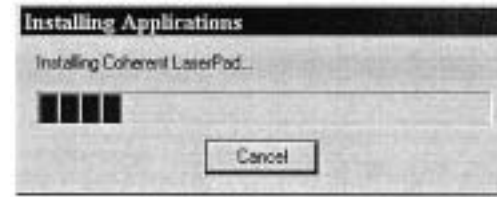
An error message, similar to the one shown below, may appear when installing LaserPAD software on more than one Pocket PC with the same host computer. To resolve this error condition, select a unique destination folder for each Pocket PC. Example: C:\Program Files\LaserPAD2.



- Click Yes when prompted to install the software in the path selected in step 4, above.



- Setup loads the application on the Pocket PC.



- When the loading process is complete, you will be prompted to check the Pocket PC screen for messages.



- Tap the Yes to All button on the Pocket PC to update the components required for the LaserPAD application. This completes the installation. A Word document named LaserPAD User Manual will also be loaded on the Pocket PC.

Controls & Connections

Input Panel

Detector Input - Connection to the Coherent SmartSensor head, using a DB-25 connector.



Output Panel

5 VDC Power Input - Input connection for the provided 5V power supply. The power supply is designed for the following AC input requirements: 100 to 240V, ~ 0.2A, 50 to 60 Hz. The input also provides battery charging capability for the SmartSensor Interface module. The battery charges whenever the power supply is connected to the Interface module, regardless of the power switch position. The USB connection does not provide battery charging capability.



A fully-charged battery will typically operate the SmartSensor Interface module for 12 continuous hours. Do not exceed this 12-hour cycle without recharging. A low-battery condition requires an overnight charging cycle (approximately 14 hours).

RS-232 Input/Output - The DB-9 connector for the Pocket PC Serial Interface cable.

USB Input/Output - The SmartSensor Interface module connector to PC-based applications.

Power On/Off - The SmartSensor Interface module input power On and Off switch. This switch may also be used to reboot the SmartSensor Interface module.

Power Indicator LED - This LED illuminates when the the Power switch is in the ON position and 5V power is active.

Start Up Procedure

- Connect the 5V power supply to the SmartSensor Interface module.

It is not necessary to connect the power supply if the SmartSensor Interface module battery is in a charged condition.

- Connect the desired Coherent SmartSensor head to the SmartSensor Interface module.
- Connect the RS-232 cable between the SmartSensor Interface module and the Pocket PC.
- Move the SmartSensor Interface Power switch to the On position.
- Power up the Pocket PC.